

Gateway Guide : Your Ultimate College Navigator Admissions

Rewatkar Rasika¹, Nakhate Shraddha², Zodge Datta³, Khandekar Prajwal⁴

¹Assistant Professor, Department of Information Technology, Kavikulguru Institute of Technology & Science, Ramtek.

²Student, Department of Information Technology, Kavikulguru Institute of Technology & Science, Ramtek.

³Student, Department of Information Technology, Kavikulguru Institute of Technology & Science, Ramtek.

⁴Student, Department of Information Technology, Kavikulguru Institute of Technology & Science, Ramtek.

Abstract – Gateway Guide: Your Ultimate College Navigator is a comprehensive resource designed to simplify the often daunting process of selecting and applying to college. This user-friendly guide provides invaluable insights into various aspects of higher education, including program options, financial aid, campus life, and career paths. With detailed information on thousands of institutions worldwide, Gateway Guide empowers students to make informed decisions and achieve their academic and professional goals. College Navigation and Admission Companion Navigating the complex landscape of college admissions can be daunting. With countless institutions, varying requirements, and a sea of information, finding the right fit can feel overwhelming. That's where our Abstract Gateway Guide comes in. Designed to simplify the process, this comprehensive guide offers invaluable insights and practical advice to help you successfully navigate your college journey. From understanding your unique strengths to crafting compelling applications, our guide provides the tools and resources you need to make informed decisions and achieve your academic goals. Gateway Guide is a comprehensive resource designed to streamline the college admission process. This guide offers invaluable insights and practical advice, helping students navigate the complexities of college applications and make informed decisions. From understanding admission requirements to crafting compelling essays, Gateway Guide provides the essential tools to maximize chances of acceptance into desired institutions.

Keywords: college admissions, college applications, college guidance, admission tips, essay writing, college selection, higher education

1. INTRODUCTION

In today's competitive academic landscape, the ability to conduct thorough and impactful research is paramount for success. When choosing a college, students who want to continue higher education are a constant source of confusion. In addition to the college's rating, students must take into account a number of other considerations. The college's admission rate is one of these variables. Only a very tiny fraction of applicants are accepted into certain highly regarded institutions' programs. These are also schools that receive a ton of applications. However, because the cost of each college's application is so costly, students are discouraged from applying to many of them. Students often only apply to a small number of institutions because of the intense competition for admission and the

hefty expense of each application. This is also the most practical choice. Therefore, a prediction system that evaluated students' prospects of enrolling in a college based on their test results and academic background would be of great use to students. A crucial and very competitive stage of any student's educational path is being accepted to college[1].

Whether you're a budding scholar or a seasoned researcher, navigating the vast expanse of academic resources can be overwhelming. Navigating the complex landscape of college admissions can be overwhelming. With countless institutions, varying requirements, and fierce competition, it's easy to feel lost. That's where Gateway Guide comes in. Our comprehensive resource is designed to guide you through every step of the college application process, ensuring you're well-prepared and confident. From understanding your strengths and interests to crafting compelling essays and navigating financial aid, we've got you covered. With Gateway Guide, you'll have the tools and knowledge to unlock your potential and secure your dream college. The first step is to identify colleges that align with your academic interests, career goals, and personal preferences. Consider factors such as location, size, academic programs, campus culture, and financial aid options. Explore college websites, online resources, and visit campuses if possible to gather information and gain a firsthand impression. Navigating the college admission process requires careful planning, dedication, and perseverance. By following the strategies outlined in this guide, you can increase your chances of gaining admission to your dream college. Remember to stay organized, seek guidance when needed, and believe in your abilities. With hard work and determination, you can achieve your higher education goals.

1.1 USER BASED PROBLEMS

Complex User Interface:

Problem: The interface of the Gateway Guide : Your Ultimate College Navigator Admissions may be overly complex making it difficult for user to navigate and utilize the features effectively.

Solution: Design a user-friendly interface with clear instructions, intuitive controls, and a logical flow. Conduct user testing to gather feedback and make adjustments based on user input.

2. LITRETURE REVIEW

The "Gateway Guide" serves as an indispensable companion for navigating the intricacies of college life. This comprehensive resource offers a wealth of information, from understanding admissions processes to mastering academic challenges. It delves into critical aspects such as financial aid, campus culture, and career exploration, providing students with the tools to make informed decisions and thrive in their academic pursuits. Whether you're a prospective student seeking guidance or a current student looking to enhance your college experience, the "Gateway Guide" is your ultimate resource for success. This review will explore the challenges students face in making informed decisions.

- It is built for Admin and User to see their result.
- Admin is allowed to create Student ID.
- College Navigating System system also manages the student details.
- To increase efficiency of managing the student records.
- It deals with monitoring the information and transaction of student.
- Editing, adding and deleting of records is improved management student data data.
- Created profiles and details are automatically viewed by web with student ID.
- Data are stored through XAMPP application.
- Provides the searching facilities based on various factors.
- Generate the list of colleges.
- Manage the information of student.
- Integration of all records of exam, academic year and subject.

2.1 PROBLEM IDENTIFICATION

Common problems in Gateway Guide include:

Constraints Handling: Students and educators face

limitations like time, budget, access to resources, and individual learning styles.

Research Opportunity: Develop methods to personalize learning plans that optimize outcomes within these constraints.

Optimization Challenges: There isn't a one-size-fits-all approach to learning.

Research Opportunity: Design intelligent tutoring systems that can adapt to individual student needs and goals, maximizing learning efficiency.

Dynamic Changes: Curriculums, learning styles, and student needs evolve over time.

Research Opportunity: Create adaptable learning materials and assessment tools that can keep pace with these changes.

Scalability: Effective educational practices need to be applicable to large and diverse student populations.

Research Opportunity: Develop scalable interventions and support systems that can be implemented in various educational settings.

Resource Allocation: Schools and educators often have limited resources (teachers, technology, etc.)

Research Opportunity: Design algorithms and strategies that optimize resource allocation to maximize student learning impact.

Conflict Resolution: Students and educators may encounter conflicts related to learning styles, expectations, or external factors

Research Opportunity: Develop methods for facilitating communication and resolving conflicts constructively within the educational environment. Constraint Handling.

2.2 USER INTERFACE

1. Front end software: Sublime Text, HTML, CSS.

2. Back end software: XAMPP PHP, Server Apache, MYSQL.

2.3 SOFTWARE QUALITY ATTRIBUTES

1. Availability: User must be registered.

2. Correctness: User must give correct user id and password while login in software.

3. Maintainability: The database must maintain correct user id and password.

4. Usability: The system must mine/search data from central database or distributed database to satisfy user's needs.

2.4 SYSTEM METHODOLOGY

The proposed college navigating system is a web-based application designed to assist students in finding suitable colleges. It features a formal structure involving an entrance exam. The system allows administrators to create, edit, and modify information, while the student management system handles student details. To enhance efficiency, the system focuses on monitoring student information and transactions. It enables easy editing, adding, and

deleting of student records, and automatically displays student profiles based on their IDs.

Data is stored using the XAMPP application, and the system provides search functionality based on various factors.

Furthermore, the system generates reports on subjects, students, courses, results, and academic years. It manages student information and integrates records related to courses, students, academic years, and subjects.

The primary methodologies include:

College Navigator system proposed with Formal Structure of Exam.

- It is built for student which is help to Navigate the college
- Admin is allowed to create, edit and modify.
- Student management system also manages the details.
- To increase efficiency of managing the student
- It deals with monitoring the information and transaction of student
- Editing, adding and deleting of records is improved management student data.
- Created profiles are automatically viewed by web with student ID.
- Data are stored through XAMPP application.
- Provides the searching facilities based on various factors.
- It generates the report on subject, student, course, result, and academic year.
- Manage the information of student .
- Integration of all records of course, student academic year and subject.

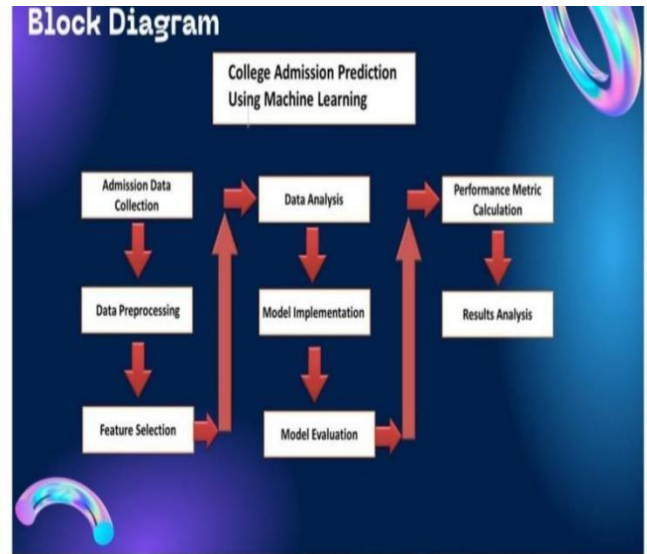


Fig. Block Diagram

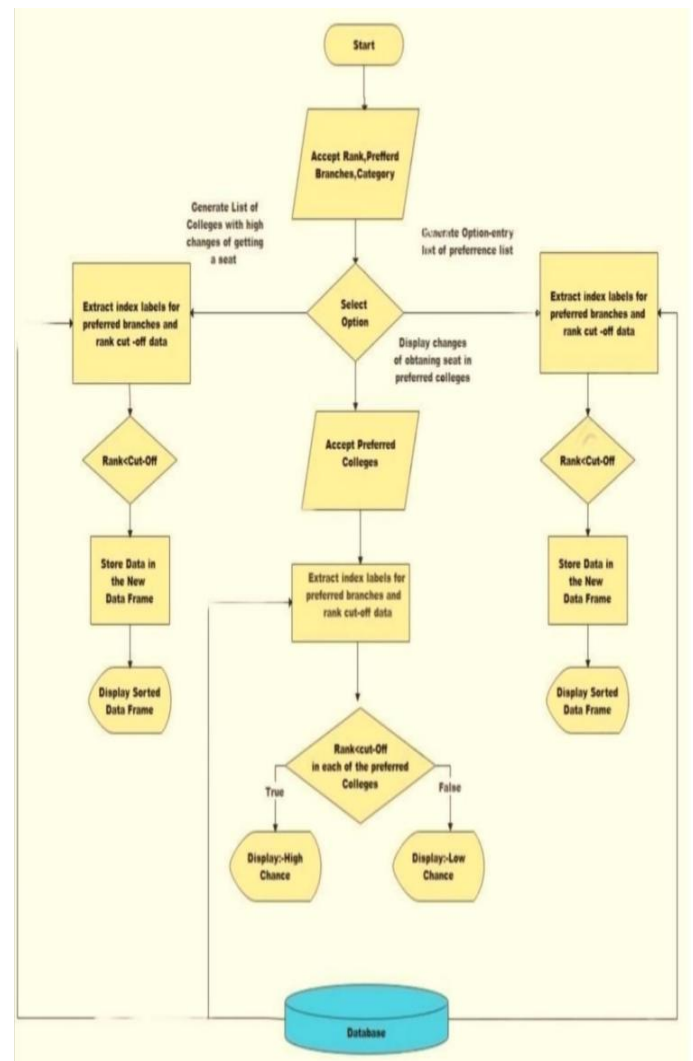


Fig. Block Diagram

3.1 APPLICATION

Gateway Guide Could be in Educational Institute.

Education: Gateway Guide in educational institutions can be a multi-faceted approach that benefits both students and the institutions themselves.

4. SECURITY ISSUE

1. Data Privacy
2. Authentication and Authorization
3. Data Integrity
4. Secure Communication
5. Audit Trails
6. Backup and Recovery

5. CONCLUSION

In conclusion, Gateway Guide College Navigator has transformed the college search process by providing students with a comprehensive and personalized platform. Gateway Guide is more than just a college application tool; it's your personal compass in the vast sea of higher education options. Designed with the student's needs at its core, this innovative platform offers a comprehensive suite of features to guide you through every step of the college application process. From the moment you begin exploring colleges to the day you receive your acceptance letters, Gateway Guide is your trusted companion. The platform's intuitive interface and user-friendly design make it easy for students of all backgrounds to navigate the complexities of college admissions. With a vast database of colleges and universities, you can easily search for institutions that align with your academic interests, career goals, and personal preferences. One of the most valuable features of Gateway Guide is its personalized college recommendations. By providing information about your academic performance, extracurricular activities, and desired majors, the platform can suggest colleges that are a perfect fit for you. This eliminates the overwhelming task of researching countless institutions and helps you focus on schools that truly value your unique qualities.

Beyond college recommendations, Gateway Guide also offers a wealth of resources to help you craft compelling college applications. The platform provides expert guidance on writing essays, building impressive resumes, and preparing for interviews. With access to sample essays, tips from admissions officers, and personalized feedback, you can confidently showcase your strengths and stand out from the competition. As

you prepare for college, Gateway Guide is your one-stop shop for all things admissions. The platform's comprehensive resources, personalized recommendations, and expert guidance make it an invaluable tool for students of all levels. With Gateway Guide by your side, you can navigate the college application process with confidence and achieve your academic dreams.

6. REFERENCE

- [1] Zhenru Wang, Yijie Shi, "Prediction of the Admission Lines of College Entrance Examination based on Machine Learning", *2nd IEEE International Conference on Computer and Communications*, 2016, pp. 332- 335.
- [2] Abdul Hamid M. Ragab, Abdul Fatah S. Mashat, Ahmed M. Khedra, "Hybrid Recommender System for Predicting College Admission", *12th International Conference on Intelligent Systems Design and Applications (ISDA)*, 2012, pp. 107-113.
- [3] Sengupta, C. Koner, N. K. Bhattacharjee and S. Gupta, "Automated Student Merit Prediction using Machine Learning," 2022 IEEE World Conference on Applie.
- [4] Charif Haydar, Anne Boyer, "A New Statistical Density Clustering Algorithm based on Mutual Vote and Subjective Logic Applied to Recommender Systems", UMAP 2017 Full Paper UMAP'17, July 9-12, 2017, Bratislava, Slovakia.
- [5] Reddy, M. Y. S., & Govindarajulu, P. (2018). College Recommender system using student preferences/voting: A system development with empirical study. *INTERNATIONAL JOURNAL OF COMPUTER SCIENCE AND NETWORK SECURITY*, 18(1), 87-98.
- [6] Yung-Shen Lin, Jung-Yi Jiang, and Shie-Jue Lee, "A Similarity Measure for Text Classification and Clustering," *IEEE Transactions on Knowledge and Data Engineering*. Vol. 26. No. 7. July 2014.
- [7] Charif Haydar, Anne Boyer, "A New Statistical Density Clustering Algorithm based on Mutual Vote and Subjective Logic Applied to Recommender Systems", UMAP 2017 Full Paper UMAP'17, July 9-12, 2017, Bratislava, Slovakia.
- [8] Sengupta, C. Koner, N. K. Bhattacharjee and S. Gupta, "Automated Student Merit Prediction using Machine Learning," 2022 IEEE World Conference on Applie.

- [9] R. Sanchez-Salmeron, J.L. Gomez-Urquiza, L. Albendin-Garcia, M. Correa-Rodriguez, M.B. Martos-Cabrera, A. Velando-Soriano, et al., "Machine learning methods applied to triage in emergency services: A systematic review", *International Emergency Nursing*, vol. 60, pp. 101109, 2022.
- [10] Amal AlGhamdi, Amal Barsheed, Hanadi AlMshjary, and Hanan AlGhamdi. 2020. A Machine Learning Approach for Graduate Admission Prediction. In *Proceedings of the 2020 2nd International Conference on Image, Video and Signal Processing (IVSP '20)*. Association for Computing Machinery, New York, NY, USA, 155-158.