

# AI STUDYMATE ENHANCING VIRTUAL LEARNING WITH AI

Ashwini Nalage<sup>1</sup>, Pratiksha Sutar<sup>2</sup>, Ashwini Mali<sup>3</sup>, Sharvari Todkar<sup>4</sup>, Swapnali Vadar<sup>5</sup>, Mrs. V.A.Jujare<sup>6</sup>.

<sup>\*1,2,3,4,5</sup> Department of Computer Science & Engineering, Yadrav (Ichalkaranji) Maharashtra, India.. <sup>\*6</sup> Assistant Professor, Department of Computer Science & Engineering, Yadrav (Ichalkaranji) Maharashtra, India.

\*\*\*

**Abstract** - Online learning offers flexibility and improved access to education but still struggles to maintain consistent student engagement and academic outcomes. Many virtual classrooms become passive learning environments, leading to low attention, reduced motivation, and weak performance. AI Study Mate is designed to solve this issue by using artificial intelligence to monitor live Zoom classes, analyze content, and automatically generate short video summaries of key concepts. The system uses data collection, natural language processing, and machine learning to evaluate student participation and learning progress in real time. Based on this analysis, it recommends personalized learning materials, including short educational videos, to help students stay interested and improve retention. By adapting resources to individual needs, AI Study Mate transforms online learning into a more dynamic and interactive experience, supporting better academic performance and an engaging learning journey.

**Key Words (Size 10 & Bold): Artificial Intelligence, Virtual Learning, Student Engagement, Natural Language Processing, Machine Learning, Online Education, Recommender System, Zoom Integration.**

## 1.INTRODUCTION

AI Study Mate is an intelligent learning platform designed to improve the online learning experience by making virtual education more engaging, effective, and personalized. The system is built on a modern and scalable technology stack, including a user-friendly interface developed using React.js and Tailwind CSS, and a backend powered by Python with Django and Node.js with Express.js, enabling robust microservices and high-performance request handling. It securely manages data using both relational and non-relational databases such as MySQL and MongoDB, ensuring efficient storage of structured information (student records, attendance, logs) and flexible management of unstructured learning content.

The platform integrates major services and APIs, including Zoom for real-time participation tracking, Google Meet monitoring, and YouTube API for retrieving learning-related video content, all connected through RESTful APIs that enable smooth, low-latency data communication. The system follows a modular, distributed, and containerized architecture using Docker and Kubernetes, supporting auto-scaling, load balancing, and reliable cloud deployment. Automated CI/CD pipelines enable continuous integration,

testing, and deployment, reducing manual errors and improving development speed.

The core intelligence of AI Study Mate is powered by machine learning and natural language processing (NLP). The system analyzes lecture audio, meeting transcripts, and student behaviour to measure engagement, detect inattention, and generate real-time lecture summaries, key points, concept extraction, and personalized content recommendations. It can automatically suggest short educational videos, micro-lessons, and study notes whenever learner attention drops, helping students stay focused during long online sessions. Future capabilities can include predictive analytics for student performance forecasting, early learning difficulties detection, and personalized learning paths.

To ensure secure and reliable operation, the platform implements strong protection mechanisms such as AES encryption, OAuth 2.0 authentication, JWT tokens, secure session management, input validation, and rate limiting to prevent unauthorized access, data breaches, and malicious API attacks. Audit logs, access control policies, and monitoring tools further enhance transparency and help maintain a secure digital learning environment. The solution is designed to be scalable for institutions of all sizes, making AI Study Mate a comprehensive platform that transforms traditional online learning into a smart, interactive, and data-driven experience.

## 1.1 PROBLEM STATEMENT

Online learning has become an essential mode of education, but maintaining student engagement remains a significant challenge. Instructors often find it difficult to identify students who are inattentive or struggling during virtual classes. This project introduces an artificial intelligence based system that analyzes student participation in real time during Zoom sessions using machine learning techniques. The system detects learners who require additional support and automatically delivers personalized educational material to improve their understanding of challenging concepts. This automated approach helps address engagement issues and enhances the overall effectiveness of the online learning environment.

## 1.2 MODELING AND ANALYSIS

The AI Study Mate system begins its operation during a live class conducted on the Zoom platform, where the lecture audio is captured in real time and used as the primary input for the entire workflow. The recorded audio stream is then segmented into small and manageable chunks, typically two to five minutes in length, allowing efficient processing in subsequent stages. Each audio segment is converted into written text using a speech-to-text engine such as Google Speech-to-Text or OpenAI Whisper, resulting in a complete transcript of the lecture. An AI-powered summarization model analyzes the transcript to extract major points and key explanations, producing a concise and coherent summary of the session. Natural Language Processing (NLP) techniques are then applied to identify important concepts and keywords within the summarized content. These extracted terms are automatically used as search queries through the YouTube Data API to retrieve relevant educational videos that support the topics discussed in the lecture. Finally, the system compiles the results to generate a short instructional video, which may consist of a brief summary of the lecture or a smart combination of the summary with relevant clips obtained from YouTube, providing an enhanced learning resource for students.

## 2. ARCHITECTURAL DIGRAM

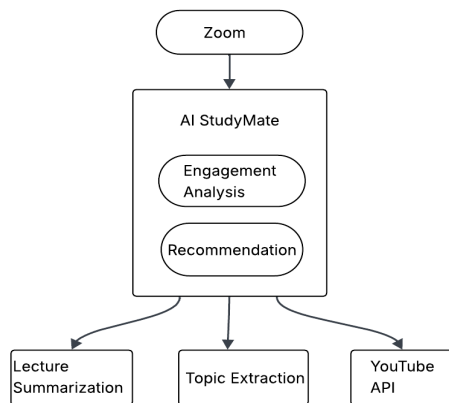
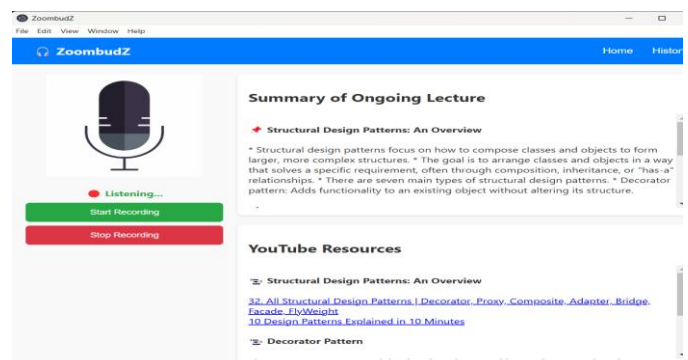
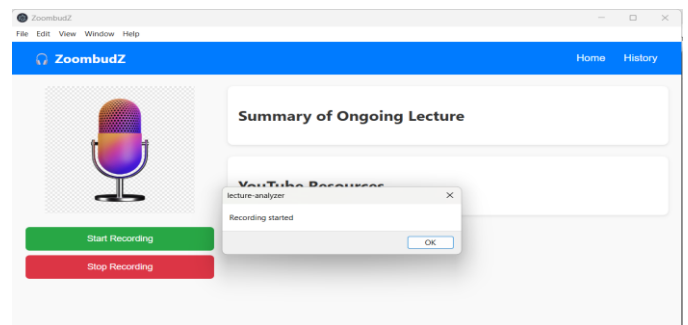


Fig. 1: Architectural Diagram of AI Study Mate System

The system is designed to integrate directly with live Zoom lectures and operate multiple intelligent functions simultaneously. It continuously analyzes student engagement to assess participation levels and identify learners who may require additional academic support. In parallel, the system performs automatic lecture summarization, generating concise representations of the classroom content to help students review essential information efficiently. Natural language processing is then applied for topic extraction, enabling the system to identify the most important concepts discussed during the lecture.

These extracted keywords are further used to query the YouTube API, retrieving relevant educational videos that align with the covered topics. All of these processes are coordinated through the AI Study Mate platform, which provides personalized recommendations by offering supplementary video explanations and learning materials. This integrated approach functions like a real-time intelligent assistant that processes the lecture alongside the student and delivers targeted resources to strengthen understanding and improve learning outcomes.

## 3. RESULTS AND DISCUSSION



## 4. CONCLUSION

AI StudyMate enhances the quality of online learning by employing artificial intelligence to monitor student engagement during live Zoom sessions. The system is capable of identifying learners who appear disengaged or are having difficulty understanding the presented material. Once such students are detected, the platform automatically delivers personalized academic assistance in the form of concise lecture summaries and contextually relevant educational videos. By offering targeted instructional support, AI StudyMate helps improve student focus and participation, resulting in a more interactive, efficient, and effective virtual learning environment.

## REFERENCES

1. Anderson, J., Kim, S., & Patel, R. (2021). Enhancing Student Engagement in Virtual Learning through AI-Driven Tools. *Journal of Educational Technology*, 15(4), 234-245.

2. Gupta, P. & Sharma, V. (2023). The Effectiveness of Short Video Reels in Improving Learning Outcomes. *International Journal of E-Learning Innovations*, 8(2), 102-110.
3. Brown, T. & Williams, M. (2022). Integrating Zoom and YouTube APIs for a Seamless Learning Experience. *Proceedings of the EdTech Conference*, 12, 78-85.
4. Chen, L. & Wong, K. (2021). Ensuring Data Security in E-Learning Platforms. *Cybersecurity in Education Journal*, 9(3), 89-97.
5. Miller, J. & Jones, A. (2019). Using Natural Language Processing (NLP) to Enhance Learning Platforms. *AI in Education Review*, 6(1), 55-63.
6. Patel, S., & Thomas, R. (2020). AI and Machine Learning in Personalized Education Systems. *Journal of Smart Learning Technologies*, 11(2), 145-152.
8. Smith, L., & Lee, H. (2022). Challenges and Solutions in Virtual Learning Environments. *Educational Research and Reviews*, 17(8), 301-310.