

IMPACT OF CONSTRUCTION EQUIPMENT DOWNTIME IN INDIAN CONSTRUCTION SECTOR

Singamsetty Spanesh¹, Chukkaluru Rukmunnisa Sulthana M Tech²

¹PG Scholar, Department of Civil Engineering, Shri Shirdi Sai Institute of Science and Engineering Nh-44, Vadiyampeta (P), Ananthapuramu-515731, AP, India.

²Assistant Professor Civil Engineering Department, Shri Shirdi Sai Institute of Science and Engineering Nh-44, Vadiyampeta (P), Ananthapuramu-515731, AP, India.

Abstract – Development project the board should energetically seek after the best utilization of gear, work, and materials. Those accountable for cost control of developed offices ought to be worried about expanding efficiency consistently. Hardware taking care of requires additional alert to set aside cash. Changes in development advancements have become conceivable in late many years on the grounds that to the presentation of new hardware and novel methods. Associations that neglect to perceive the effect of different advances and neglect to adjust to changing environmental factors have been legitimately pushed out of the development business. Unearthing, mining pretty much nothing or gigantic amounts of soil and shipping it over significant distances, position, compacting, evening out, snoozing, evaluating, pulling, and other essential cycles are completely associated with the development of any undertaking. Development gear alludes to each of the machines that are frequently used to complete different development activities. Development organizations are oftentimes stood up to with issues like hardware inaccessibility, disappointment or breakdown, and mishaps, all of which diminish creation. Helpless hardware choice is every now and again referred to as a critical reason for gear related issues. Taking on a strong hardware support the executives methodology is the best way to limit this monstrous measure of misfortune that ordinarily results from gear breakdown or disappointment. This will guarantee that development gear is ready to rock 'n roll consistently and that the undertaking is finished on schedule, helping the venture's productivity. Therefore, understanding productive development hardware the board requires an exhaustive comprehension of successful development gear support. Development directors should comprehend that suitable upkeep of development gear is a benefit place, and that successful hardware the executives is basic to the productivity of development associations. Insufficient manual hardware the executives cycles and choices regularly bring about huge misfortunes in development organizations. Hardware the executives strategies shift somewhat relying upon the size of the worker for hire. The essential objective of a hardware director is to wipe out personal time, expand gear use, and improve creation at the most minimal conceivable expense. It is a notable truth that on any building site, we can track down a huge scope of development machines that make building work simpler, more secure, and quicker. Development project the executives should fanatically seek after the best utilization of laborers, materials, and gear. In late many years, the reception of new gear and inventive methodologies has empowered gigantic headways in development innovation. The sort and size of development gear picked fundamentally affects the measure of time and exertion important, just as the undertaking's place of work usefulness. On account of enormous development projects, these fill in as a spine. The legitimate utilization of the reasonable hardware adds to the venture's financial aspects, quality, wellbeing, speed, and practicality. Interstate tasks, water system, structures, and force projects all require hardware. Gear and apparatus have represented just about 15-30% of the whole task cost. Therefore, it's basic for site chiefs and development organizers to comprehend the elements of the most well-known sorts of development gear.

1. INTRODUCTION

1.1 Student Background

Major structural designing undertakings are completed from one side of the planet to the other consistently. Undertaking conditions like specialized intricacy, opportune finishing, project sway, asset imperatives, and the huge expenses related with such ventures require the most productive utilization of preparation, planning, and development controls to meet the task's objective culmination date and cost. Thus lies the way to development the executives' prosperity: augmenting the utilization of accessible assets, like materials, work, gear, cash, and time, to finish the undertaking in the most proficient and compelling manner conceivable. The development area in India is rapidly extending and turning out to be more aggressive. Development gear is one of the spaces in development activities where extensive upgrades might be acquired in the development area. The achievement of a development project is fundamentally controlled by the proficient utilization of existing assets like HR, machines, materials, and cash. Development hardware should be overseen in a calculated and expert way by the business. In the event that less consideration is paid to the support of development hardware, the gear will separate. Development gear breakdowns create setbacks for development exercises and straightforwardly affect project finish, so personal time following information is basic for recognizing and revising continuous apparatus issues and inadequacies, just as tweaking support and activities the board frameworks. It's pivotal to take note of that to assist building projects, a general support framework ought

to be vital. Considerable costs emerging from the disappointment of any machine and its effect on the chain of work connected with it offer a totally new trouble in that they must be assessed with any level of certainty under very severe, clear cut conditions.

Creation productivity and viability are among the top organization worries in the present cutthroat assembling industry. Accordingly, creation hardware is turning into the focal point of consideration, as it is the foundation of the assembling system and a pivotal usefulness pointer. The requests of extraordinary execution push organizations to truly consider bringing down the recurrence of machine personal time and the costs related with it.

1.2 The Study's Purpose and Objectives

The objective of this exploration is to examine and recommend a structure for compelling and proficient hardware the board for building destinations in Pune, Maharashtra. To recognize components that add to time and expense overwhelms. Through a contextual investigation, decide the expense of vacation in a structure project. Making a design and introducing the outcomes for cost examination. To examine the present status of development gear use and the board. To give a suggestion to a personal time arrangement.

1.3 Study Requirements

- There should be a solid calculated model that can be utilized to a wide scope of monetary decisions.
- Make a hearty measurable way to deal with back up the model.
- Consider subjects, for example, cost classes and drivers that are related with personal time events, regardless of whether planned or unanticipated.
- The hardware the board framework and strategy impact the benefit of project workers who spend more in gear.
- Makers might further develop hardware execution, functional measures, and upkeep strategies by making a framework that can screen and investigate gear adequacy.

1.4 The Study's Limitations

Just the development area in Pune is answerable for surveying the impact of gear vacation on building projects. The work is restricted to a contextual investigation led at a framework site, and the results will be founded on data assembled by means of meetings with industry subject matter experts. The accompanying focuses might be utilized to classify the constraints of this work:

The review's objective populace will generally be drawn from development firms with huge capital uses. Hardware personal time, as per this, affects cost and creation.

(2) This task rejected IT firms and specialist organizations.

Improvement processes for bringing down personal time costs will be restricted to support rehearses, paying little mind to elective productive and proper methodologies.

Then again, when directing this examination, the requirements were classed as wild factors. The originally was the time limit; this work depended on a study research and required more opportunity to process and dissect countless answers. The subsequent explanation was an absence of assets and writing on assessing vacation in the modern climate, especially exercises that were connected to expected stoppage costs.

1.5 The Research And Objective Questions

The essential objective of this exploration is to take a gander at the expenses of personal time in Swedish assembling organizations and how they are surveying them. This work will explicitly resolve issues like as cost classifications and drivers that are attached to personal time events, regardless of whether booked or unexpected. What methods did the organizations utilize to quantify the expense of personal time, and what was their general perspective on the expense distinction among booked and startling stoppages? At last, endorsed support applications assist with diminishing personal time events and, accordingly, uses.

- Therefore, a progression of examination questions was made to accomplish the work objective, and these inquiries are:
- Would you be able to recognize the significant expense classifications and variables related with booked and surprising stops?
- What are the philosophies utilized in industry to ascertain the expense of vacation?
- How does the business see the expense distinction among arranged and unexpected creation stops?
- What is the support plan set up to lessen personal time and, thus, costs?
- Is there an exhibition estimating component set up for surveying creation hardware upgrades?

1.6 Procedure

The philosophical methodology toward confirming any exploration attempt is for the most part focused on discussing the strategy utilized for a particular request. The decision to pick one method over one more will be founded on the specialist's ontological and epistemological perspective, which is regularly attached to the examination issues nearby. The review ideal models implied positivism and interpretivism, two moderate philosophical frameworks. The two schools have substantially affected the development of petulant science.

Positivism is credited similar to a fellow benefactor of the epistemological development, especially in the field of sociology. The authors of this way of thinking progressed the idea that the social reality exists outside of the scientist's control and might be straightforwardly evaluated through perception. This expression infers that the specialist's capacities should be restricted. Subjectivity is at this point not endured. Maybe, objectivity is the current inclination that considers sensible logical examination. Besides, the subject of the review doesn't matter to or effect on the investigations' autonomy.

1.7 limitations and delivery

The work delimitations might be separated into the accompanying classifications:

(1) The example bunch for this review was generally drawn from modern firms with huge capital uses. Hardware personal time, as indicated by this, affects cost and creation.

(2) This venture barred IT firms and specialist co-ops.

(3) Improvement methodologies for bringing down vacation costs were exclusively connected to support rehearses, autonomous of option effective and applicable methodologies.

Then again, when leading this examination, the imperatives were classed as wild factors. The initially was the time impediment; this work depended on a review research and required more opportunity to process and break down countless answers. The subsequent explanation was an absence of assets and writing on assessing personal time in the modern climate, especially exercises that were connected to expected stoppage costs.

2. LITRECHER REVIEW

2.1 Downtime gauge of building structures utilizing fluffy rationale: Melissa De Iuliis, Omar Kammouh, Gian Paolo Cimellaro, and Solomon Tesfamariam (2018). Utilizing fluffy rationale, the creator examined the computation of vacation for development structures. The creator's significant objective was to give an approach to anticipating development vacation utilizing a Fuzzy rationale various leveled engineering. Subsequently, the creator of this review isolated personal time into three classes.

2.2 Jawad A. Alsuliman (2019), Causes of Delay in Saudi Public Construction Projects: The creator examined the elements that add to delays in Saudi public development projects. The creator takes a gander at the explanations for delays out in the open structure projects in Saudi Arabia.

2.3 Madhav Prasad, Moonseo Park, Construction Equipment Management: The creator explored the formation of a personal time model for development hardware the board. The creator resolved the issue by examining the causes and ramifications of personal time utilizing the vacation model. The creator's use of the model structure to Nepal's nine streets. The impact of DT is explored as far as span and cost.

2.4 Miss Kalpana Gangane and Mr. Dipak Patil (2017), Downtime Cost of Equipment Used in the Construction Industry: The creator led research on the personal time cost of hardware utilized in the development business. The creator's significant objective was to show how development organizations adapt to gear vacation expenses and how they look at how to lessen them..

2.5 Sujit Shivaji Jadhav, Prof. Rohit Salgude (2019), Downtime Cost of Construction Equipment: The creator checked out the expense of vacation in the development business. The creator's significant objective was to accentuate substantial gear the executives techniques and vacation in large stone smasher plants so they could be utilized as an establishment for fostering a personal time and cost methodology.

M.Manikandan, Prof. M. Adhiyaman, and Dr.K.C.Pazhani (2.7 M.Manikandan, Prof. M. Adhiyaman, Dr.K.C.Pazhani) (2018), A review and examination of the executives development hardware utilized in development projects determined to expand efficiency: The creator directed review on the administration of development gear in development projects to build usefulness.

3. RESEARCH METHODOLOGY

3.1 Methods of cost bookkeeping

3.1.1 Cost bookkeeping in the conventional sense

In the assembling business, there are a few expense bookkeeping techniques. The advancement of those costing techniques isn't generally in a state of harmony with the progressions that happen underway frameworks. The utilization of lean assembling techniques powers organizations to make another costing structure that can satisfy the needs of adaptable creation lines. Beside the created mechanization, this specialized advancement made Swedish assembling endeavors mindful of the meaning of further developing their costing strategies, since it was observed at a more significant level. Likewise, in a re-visitation of exemplary costing bookkeeping methods, Swedish undertakings got their bookkeeping framework from a model at first given by Frenckner and Samuelson, [24].

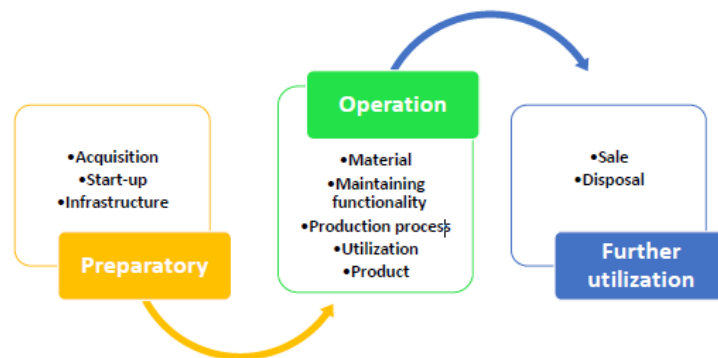


Figure 1.1. The structure of forecasting model for calculating LCC

3.9 Identifying the causes and outcomes of personal time

The length of interaction uptime all through the entire store network is shown by the business viewpoint of framework accessibility. The better the accessibility, the higher the framework throughput and, thus, the higher the profit from resources and venture. Personal time, then again, alludes to when the framework is blocked off because of planned or unexpected blackouts. Hardware disappointments or cycle interruptions were the most widely recognized reasons for unscheduled stoppages. Booked stops, then again, are believed to be foreordained cycles of exercises that are completed as a determined period for which the machine should be ended. Support, arrangements, changes, investigations, closures, preparing, breaks, cleaning, and backup state [34], for instance, just as programming and equipment overhaul/update

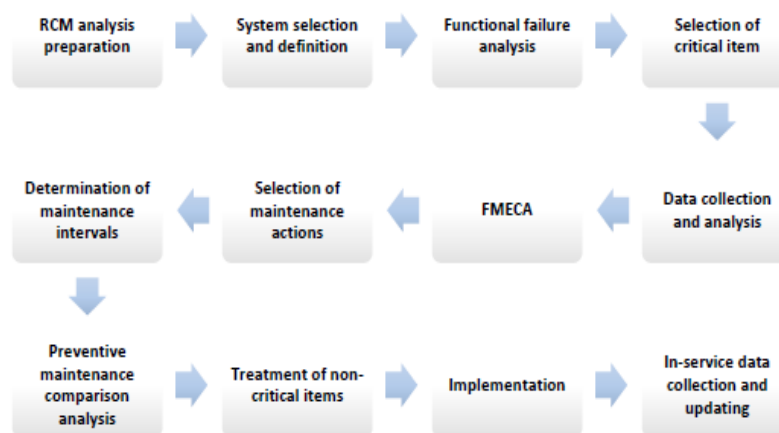


Figure 1.5 . The sequential steps of RCM analysis

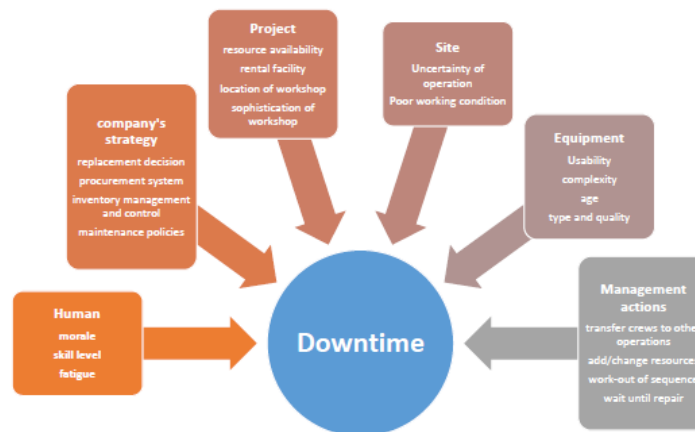


Chart 1.6 The qualities and methodology that are normal to the Downtime occasion

Vacation events are dynamic in nature and have long haul consequences. In particular, vacation that is brought about by unforeseen stoppage, for example, machine breakdowns that wait for extensive stretches of time, and this machine is respected urgent in that any inborn disappointment brings about a total creation halt. Therefore, the outcomes of such mishaps are serious since they decrease the proficiency of the assembling system, bringing about a type of easygoing circle. For instance, when a machine is down, the principal perceptible result is asset inaction - administrators and gear - and consequently a postponement in project improvement (request satisfaction) just as expanded strain on the plan for getting work done. Due to the size of the repercussions, the chiefs might get redirected from great circumstance the board and resort to surged support. This impedance will in general prompt helpless support quality, which thus prompts vacation occasions, etc, making an awful building up cycle [1].

4. RESULT

4.1 On a size of 1 to 5, where 1 addresses amazingly low and 5 addresses extremely high, how might you rate your comprehension of vacation cost examination corresponding to creation hardware?

75 individuals participated in the occasion.

	1 (1)	2 (2)	3 (3)	4 (4)	5 (5)
	Σ %	Σ %	Σ %	Σ %	Σ %
Status	14x 18.67	16x 21.33	22x 29.33	17x 22.67	6x 8.00
arithmetic average					
standard deviation					2.80 1.22

4.2 What is the extended expense of personal time as a level of generally speaking creation costs? (Sum in percent)

There were 71 members; right reactions were 26 and invalid answers were 45. (the respondents don't have a clue about the appropriate response)

Not really set in stone normal rate is 23.9 percent dependent on the substantial reactions.

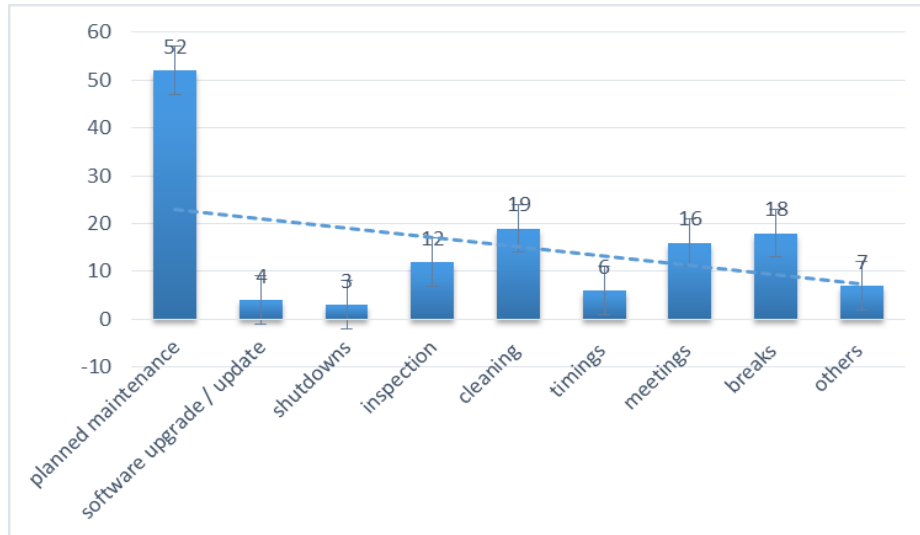
4.3 How a large part of the planned creation time is relied upon to be lost because of personal time? (Sum in percent)

72 individuals partook; 47 individuals gave authentic reactions, while 25 individuals gave wrong answers.

The figured normal rate dependent on the legitimate reactions is: 13.3 rate point

4.4 Choose the essential factors that cause booked stoppages at your association (from the choices underneath); note that the member might pick more than one reaction.

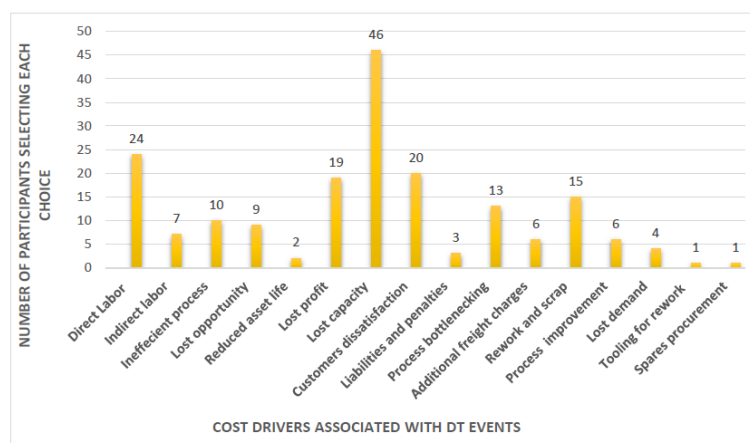
64 individuals partook in the review.



Other "others" driving causes referenced by respondents incorporated various obstructions for creation processes enduring under two minutes, just as an absence of agents because of an assortment of elements like disease. Material deficiencies, low quality, and unfulfilled orders were totally referred to as contributing components to the expected end.

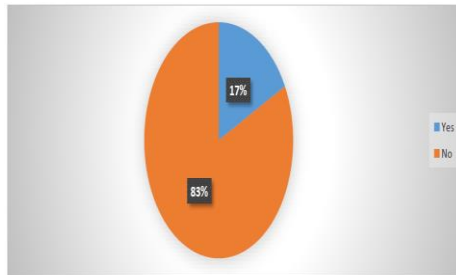
4.5 as far as excursion occasions, both planned and startling, which cost classes and drivers are generally imperative to the organization? (From the rundown beneath, select something like one choice.)

A sum of 62 individuals were in participation.



4.6 Does the association have an instrument set up for examining and anticipating excursion costs?

The social affair drew an aggregate of 63 individuals.



4.7 by and large, what is the level of get-away cost that is reserved during individual time? (Rate all out)

Eleven individuals partook, eight of whom provided certified reactions and three of whom gave erroneous reactions.

The standard rate, which isn't fixed in stone, is 36.9%, contingent upon the critical responses.

If not, what amount of the absolute get-away use could be distributed to arranged individual time? Note that this is a theoretical response dependent on the association's own insight.

There were 52 members, with 23 right reactions and 29 inaccurate reactions.

The recorded ordinary rate, which depends on critical responses, is 33%.

4.9 all things considered, what amount does an hour of impromptu get-away expense your organization? (SEK in Swedish)

There were 46 individuals altogether, with 39 right reactions and 7 inaccurate reactions.

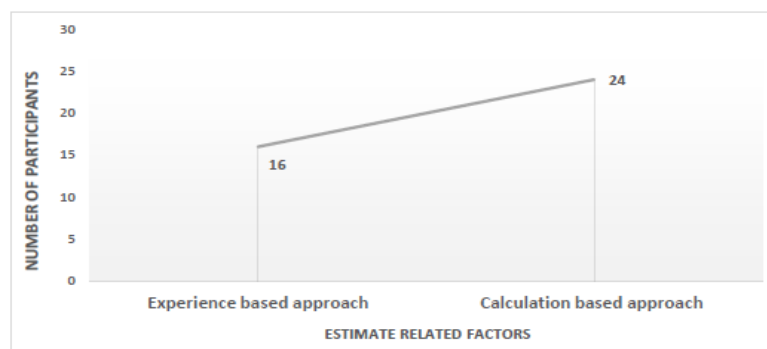
4.10 all things considered, what amount does one hour of arranged get-away expense your association? (SEK in Swedish)

There were 46 members, with 35 right reactions and 11 inaccurate reactions.

4.11 Based on questions 7 and 8, how were these properties surmised?

There were 44 members, with 40 right reactions and four erroneous reactions.

The accessible evaluations are isolated into two gatherings (An and B): the first depends on experience, while the second depends on calculation. The methodology for ascertaining the hourly expense of the individual time occasion was in a general sense isolated into three classifications. Direct work and lost creation costs; fixed and variable machine costs; spending plan utilizes, lost pay, cost strain, and standard costs; and some communicated additional part computation and extra time cost assessment



4.12 What cost bookkeeping systems did the association utilize to follow individual time costs? Pick your response and afterward rate the execution status on a size of 1 to 5, with 1 showing incredibly low and 5 demonstrating exceptionally high? It's significant that every part has the choice of choosing a couple of reactions.

There were 48 rivals altogether, and the votes were appropriated as follows:

Method/ scale	1		2		3		4		5		Σ	%	0 +	
	Σ	%	Σ	%	Σ	%	Σ	%	Σ	%				
Activity based costing	18x	45.00	3x	7.50	4x	10.00	1x	2.50	.	.	14x	35.00	3.10	2.27
Life cycle costing	14x	35.90	7x	17.95	2x	5.13	2x	5.13	.	.	14x	35.90	3.23	2.23
Recourse consumption according	10x	23.26	2x	4.65	8x	18.63	9x	20.93	2x	4.55	12x	27.91	3.63	1.89
Others	3.85		2x	7.93	3x	11.45	2x	7.69	4x	15.38	4x	53.85	4.85	1.57

The "others" class incorporated the association's expense calculation measure dependent on experience and the utilization of excursion cost observing hardware. The methods incorporate OEE and uniqueCost for each machine, machine cost driver, ERP system apleness measure, and cost association.

4.13 Is there a framework set up to ensure that individual time consumptions are limited?

Number of participants: 51

19 (37.3%): yes

32 (62.7%): no



4.14 - A - A - A - A - A - A - A - A - A - A - A - A - A - An If this is the situation, pick the main choice and the level of use on a size of 1 to 5, with 1 showing exceptionally low and 5 demonstrating very high. It's important that every part has the choice of choosing a couple of reactions.

There were 29 up-and-comers taking all things together, and the votes were conveyed as follows:

measurement tool/ scale	1		2		3		4		5		Σ	%	0 +	
	Σ	%	Σ	%	Σ	%	Σ	%	Σ	%				
overall equipment effectiveness	3x	11.11	3x	11.11	5x	18.52	5x	18.52	7x	25.93	4x	14.81	3.18	1.59
total equipment effectiveness performance	9x	42.86	2x	9.52	.	.	2x	9.52	.	.	8x	38.10	3.29	2.35
Others	2x	12.50	.	.	5x	31.25	2x	12.50	1x	6.25	6x	37.50	4.13	1.78

Authoritative unequivocal experiences like time between frustrations, time capability (working time/outright time), and machine breaking point and usage were remembered for the "others" class.

4.15 Which of the accompanying standards addresses the association's center obligation to lessening equipment personal time and, accordingly, human time costs? Pick your reaction and level of utilization on a size of 1 to 5, with 1 showing exceptionally low and 5 demonstrating very high. It's important that every part has the choice of choosing a couple of reactions.

There were a sum of 49 contenders, and the votes were parted as follows:

Policies / scale	1		2		3		4		5		6		7	
	Σ	%	Σ	%	Σ	%	Σ	%	Σ	%	Σ	%	Σ	%
preventive maintenance	1x	2.04	2x	4.08	4x	14.69	17x	34.69	22x	44.90	3x	6.12	4.35	1.01
coercive maintenance	1x	18.18	13x	29.55	10x	22.73	7x	15.91	3x	6.82	3x	6.82	2.84	1.45
reliability centered maintenance	11x	28.21	5x	12.82	5x	12.82	1x	2.56	17x	43.59	17x	43.59	3.64	2.22
Condition based maintenance	6x	13.64	2x	15.91	12x	27.27	7x	15.91	11x	25.00	11x	25.00	3.52	1.73
total productive maintenance	11x	27.50	4x	10.00	7x	17.50	7x	17.50	8x	20.00	8x	20.00	3.28	1.87

4.16 Assess the accompanying case by positioning the choices on a size of 1 to 5, with 1 demonstrating full conflict and 5 showing total understanding.

It's fundamental for an appropriate get-away spending assessment...

The complete number of individuals who participated was 50. 4.16 Evaluate the accompanying case by positioning the choices on a size of 1 to 5, with 1 showing totally differ and 5 demonstrating completely concur.

It's fundamental for an appropriate get-away spending assessment...

There were a sum of 50 individuals that participated in the review.

Option/ scale	1		2		3		4		5			
	Σ	%	Σ	%	Σ	%	Σ	%	Σ	%	Σ	%
1 that downtime cost analyses includes planned downtime cost	4x	8.51	7x	14.89	9x	19.15	12x	25.53	15x	31.91	3.57	1.31
2. that company mindset adopts a new approach of considering the planned downtime cost	4x	8.16	5x	10.20	8x	16.33	13x	26.53	19x	38.78	3.78	1.30
3. that data sources and data collection are compatibility and easily shared between different departments	3x	6.38	8x	17.02	6x	12.77	14x	29.79	16x	34.04	3.68	1.29
4. that cost drivers are obviously allocated	4x	8.51	7x	14.89	9x	19.15	11x	23.40	16x	34.04	3.60	1.33

As indicated by the discoveries, the weighted normal score on a Likert scale for the information condition of ideas, strategies, and cycles for estimating vacation was accounted for at (2.8). This outcome shows that the score is close to direct, demonstrating that the organizations are uninformed of the expense of personal time. They aren't arranging or teaching groups to evaluate and distribute the full expense of personal time. The assembling organizations, then again, were anticipated to have a vacation cost proportion of 23.9 percent of by and large assembling costs and 13.3 percent of booked creation time. Those qualities are very high and have various unseen side-effects, for example, a decrease in gear limit contrasted with the hypothetical limit provided by the first maker, just as a negative impact on overall revenues. The issue is that in spite of the fact that supervisors know about the previously mentioned repercussions, they have not gone to any significant lengths toward estimating the full expense of vacation, liking rather to depend on reasonable deductions.

At the point when it came to deciding in favor of the driving factors that caused the booked end, The votes were circulated as follows: plan upkeep (81.3 percent), cleanings (29.7%), breaks (28.1 percent), and gatherings (28.1 percent) (25%).

Schedule Maintenance	81.3%
Cleaning	29.7%
Breaks	28.1%
Meetings	25%

This is the extent of votes given to each factor out of an aggregate of 64. The most compelling motivation of arranged end in assembling firms is standard support, which is trailed by cleaning tasks, which are vital in building offices. Regardless, mid-day breaks and morning gatherings, which last anyplace from thirty minutes to 60 minutes, affect usefulness. On the opposite side, cost attributable to unscheduled end was for the most part determined by lost limit costs. Direct work, Customer despondency, and lost benefit costs were the other expense classes that members viewed as basic concerns. The votes were allotted as follows: (74.2 percent), (38.7%), (32.3 percent), and (30.6 percent) for every classification. These expense communities, especially the expenses related with botched freedoms, were not completely followed. As displayed in the discoveries part, this end was brought about by the shortfall of a deliberate methodology for examining and estimating the genuine expense of vacation. For instance, most of the associations inspected (83%) don't have any incorporated procedures for perceiving and tending to such uses.

The expense proportion of booked and sudden vacation from all out personal time cost was assessed to be (36.9%) and (63.1 percent). The normal expense distinction was assessed to be around (68.7 percent). In view of their experience and some quotes, these figures were presented by study members. Their general way to deal with working out personal time costs was to use fixed and variable direct costs like work, utilities, and materials. Notwithstanding projected expenses, monetary records were utilized to work out the aberrant expenses of personal time events. Besides, the RCA and ABC cost bookkeeping frameworks were the most well known for assessing creation costs. As per the Likert-scale, the weighted normal execution score for every one of those methodologies is (1.5) for ABC and (2.7) for RCA. These numbers demonstrate that the two procedures are utilized in organizations, however their execution state shifts from low to direct, showing the trouble of changing vacation elements to exact quotes. Besides, regardless of whether picking either ABC or RCA, the (35%) and (27.9%) of members were uncertain with regards to the degree of execution and checked the "Don't have the foggiest idea" choice. It was a piece disrupting to scrutinize the exhibition estimating methods the enterprise used to assess the progressions as an establishment for their vacation cost examination. 67% of the associations addressed had no estimating instrument set up to assess their review and the results that emerge from it. Notwithstanding, there are 37.3 percent of the people who accept such measurements exist. Members picked OEE as the instrument with the most noteworthy weighted score (3.4) on a Likert-scale as per its execution. OEE is generally utilized in the assembling business as a critical proportion of value, execution, and accessibility.

5. CONCLUSIONS

In building projects, development gear is very huge. It supports the convenient finishing of the undertaking while at the same time keeping a characterized level of value. As building locales become greater hardware escalated, gear disappointment might affect the site's turn of events. The cementing system for private structure locales was completely examined to have a superior comprehension of the gear's activity, working conditions, and hardware upkeep. The current writing on development gear breakdown and hardware the board was inspected to decide the components that cause vacation and their effect on the building site.

Vacation causing causes were partitioned into three classes: site-related variables, gear related factors, and team level issues. It was found that there was no writing on cataclysmic disappointments in substantial hardware like clumping plants, substantial siphons, travel blenders, etc. Subsequently, the upkeep history of an enormous development business over the past two years was inspected to distinguish genuine substantial hardware disappointments.

Disappointment system and impact examination was performed to more readily comprehend the results of substantial gear disappointment hands available. On a size of location, frequency, and seriousness, plant directors were approached to rate every disappointment class. The danger need number was utilized to rank the disappointment modes. To comprehend the Batching plant's dependence on other gear, the functioning hours of all the cementing hardware drew in at the site were broke down.

This was useful in deciding the expense of a clustering plant breakdown. Important costs were assessed and observed to be multiple times more prominent than the genuine expense expressed hands available. The examination expected to find issues with substantial hardware, for example, a Batching Plant, Concrete Pump, Transit Mixer, and Wheel Loader. It additionally focused on fathoming the cementing system and the significance of one piece of gear over another. To recognize the disappointment modes that give the most danger, a disappointment mode and impact investigation was led. There were concerns raised with regards to gear support arrangements. Components that cause gear vacation According to a writing survey, the accompanying components have been found to initiate hardware personal time in different ways.

• Factors influencing the site and the team • Factors influencing the gear • Company methodology and rules • Factors influencing the task level • Site the board exercises

Suggestions: a) If at all doable, stay away from breakdown support.

b) For gear, a blend of preventive and prescient upkeep will give unrivaled results.

c) For plant upkeep, dependability focused support ought to be utilized.

d) To lessen interdepartmental questions, appropriate work arranging and support planning ought to be connected with ideal use.

f) FEMA might use it to look into disappointment components early and make deterrent strides subsequently.

g) The danger need number for a pinnacle crane is higher for wrong examination and inadequately taught administrators.

h) In an engine grader, the danger need number is higher for administrators who have not been sufficiently prepared, demonstrating that the administrator should be appropriately instructed.

I The danger need number for a substantial blender is higher for adjustments and fixes not performed by a certified approved individual.

In light of the RPN esteem, these disappointments vary for each piece of hardware.

Accordingly, RPN is basic in each gear disappointment.

REFERENCES

- [1] Melissa De Iuliis, Omar Kammouh, Gian Paolo Cimellaro, Solomon Tesfamariam - Downtime assessment of building structures utilizing fluffy rationale - International Journal of Disaster Risk Reduction 2018
 - [2] Melissa De Iuliis, Omar Kammouh, Gian Paolo Cimellaro, Solomon Tesfamariam - Downtime assessment of building structures utilizing fluffy rationale - International Journal of Disaster Risk Reduction 2018 [3] Construction Team Downtime Minimization Model with Efficiency Coefficients - Michaa Krzemiskia - Procedia Engineering 161 (2016) 18–22
 - [3] Jawad A. Alsuliman - Delay causes in Saudi public structure projects – Alexandria Engineering Journal (2019) 58, 801-808.
 - [4] Madhav Prasad (Madhav Prasad) is an Engineering Construction and Architectural Management • June 2004 • Nepal, Moonseo Park - Downtime model advancement for development hardware the board - Engineering Construction and Architectural Management [5] Dipak Patil, Kalpana Gangane - Downtime Cost of Construction Equipment - International Journal on Future Revolution in Computer Science and Communication Engineering Volume: 3 Issue: 12
 - [6] Downtime Cost of Construction Equipment - Sujit Shivaji Jadhav, Prof. Rohit Salgude - International Journal of Science, Technology, and Engineering | Volume 5 | Issue 10 | April 2019
 - [7] Implementing a deliberate way to deal with the vacation cost - International Journal of Engineering Applied Sciences and Technology, 2019 Vol. 3, Issue 12 - Bhushan B. Malusare, Prof. Hemant Salunkhe
 - [8] Dr.K.C.Pazhani, M.Manikandan, Prof.M.Adhiyaman - An exploration and examination of development gear the board used in development projects for supporting efficiency - International Research Journal of Engineering and Technology Volume: 05 Issue: 03 | Mar-2018
 - [9] Maintenance Strategies to Reduce Downtime Due to Machine Positional Errors - COIMBRA 2014
 - [10] Abubaker Shagluf; A. P. Longstaff; S. Fletcher Mr. N. Sakthivel and Prajeesh. V. P. - Management of Equipment and Machinery in Construction - International Journal of Innovative Science, Engineering, and Technology, Vol. 3 Issue 5, May 2016.
- ter Simulation Confere