

# E-PASS GENERATION AND MANAGEMENT SYSTEM DURING CURFEW

Aditya Patel<sup>1</sup>, Bhavika Gode<sup>2</sup>, Faisal Maknojia<sup>3</sup>

<sup>1-3</sup>Dept. of Information Technology, Mumbai University, Theem College of Engineering, India

\*\*\*

**Abstract** - Computers have become a way of life for today's high society. Many aspects of modern and life that we have come to accept as common place here would not be possible if there were no computers. Today computers are used extensively in many areas of business, industry, science, education etc. The major advantage of computer techno is its speed that makes it able to give some useful information very quickly. This speed also opens new approaches to problem solving and data processing. Another feature is its accuracy. Though the computers do only what is instructed at every instant, these instructions are taken into account and accurate information's are produced. Computer can hold data and instruction in an electronic representation in internal memory and this data can be retrieved at any time. The project entitled "E-Pass Generation and Management System During Curfew" is a software package, which can be used in curfew for managing the pass of people' computer efficiently.

**KeyWords:** Curfew, software, computer, E-pass, Management ,etc

## 1. INTRODUCTION

Curfew Pass Management system could be a web-based technology which will manage the records of pass that is issue by body and conjointly facilitate to supply on-line curfew e-pass to those who got to travel mandatory. Curfew Pass Management System is associate degree automatic system that delivers processing in terribly high speed in systematic manner. The code powered by PHP assures clear and economical services to the agency. This easy-to-operate system helps to access and modify user details, provides economical printing facility. The code is meant to supply Reliable and error free data.

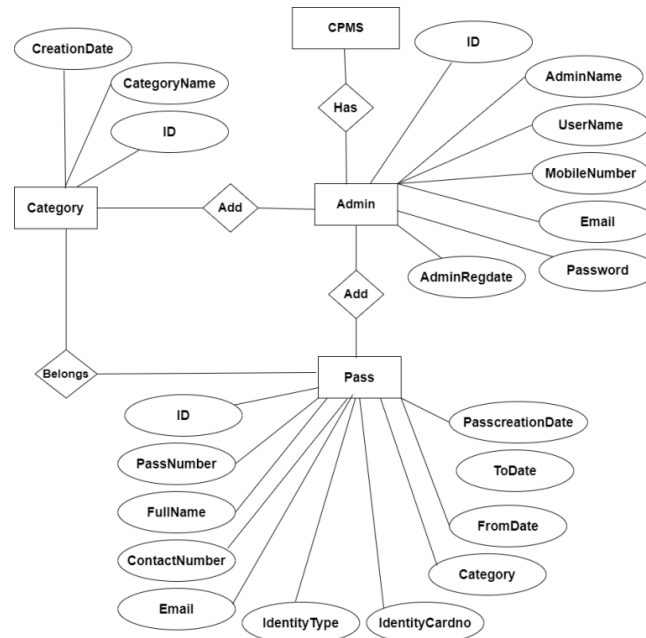
### 1.1 Purpose and Scope

Lockdown 4.0 looms over Bharat with little or no progress on the reduced range of cases. A fast spike in cases within the previous few weeks has brought Bharat to its unsettling and depressing range of quite one hundred thousand infected cases. The Centre has delegated some lockdown selections and announcements to State governments supported however their State is faring. Once all of your credentials are stuffed and your purpose has been clearly expressed, your application are sent to the authorities for examination. The assigned department can then notify you via associate degree SMS if your application has been approved. The SMS will offer a transfer link to induce the e-pass. This e-Pass has to be carried with you once you area unit movement as you'll be stopped by personnel to see your details and if you're permissible to travel throughout the imprisonment. take care to carry it with you in any respect times. The departments area unit fastidiously scrutinising applications and solely approving those who area unit real and emergency cases.

### 1.2 Database Design

The data is processed and verified by the admin has portal that is username and arcanum operate. Admin then verifies the small print of the candidates Associate in Nursingd decides whether or not to issue an e-pass for the actual individual. this {can be} a whole e-pass generating Associate in Nursingd Management System wherever users from everywhere Republic of India can enter their details and build missive of invitation to come up with an e-pass throughout the Lockdown/Curfew amount. the information then endure bound process, verification for a in generation of Associate in Nursing e-pass. the information within the system needs to be keep and retrieved from info. coming up with the info is an element of system style. knowledge components and knowledge structures to be keep are known at analysis stage. they're structured and place along to style the information storage and retrieval system. A info could be a assortment of interconnected knowledge keep with minimum redundancy to serve several users quickly and with efficiency. the overall objective is to form info access straightforward, quick, cheap and versatile for the user. Relationships square measure established

between {the knowledge|the info|the information} things and surplus data things square measure removed. standardization is finished to urge an inside consistency of information and to own minimum redundancy and most stability. This ensures minimizing knowledge storage needed, minimizing possibilities of information inconsistencies and optimizing for updates. The MS Access info has been chosen for developing the relevant databases.



## 2. System Overview

The E-pass system provides choice to the Admin to pick out a class (Which is necessities and as directed by the state government) to assign a specific a selected style of e-pass turning into there to particular class. Admin has rights to add/remove a specific class. Admin portal has associate choice to add details of Admin himself and additionally provides all the access management to the admin. The admin will generate and issue a pass to a specific person. this is often associate access based mostly internet application developed mistreatment Php, MySQL, JQuery, mythical being and JavaScript, when the victorious generation of the e-pass the pass holders will verify their travel simply coming into the pass variety within the given input field. The pass will be verified globally from anyplace with the assistance of the pass Id. This helps the user and also the authorities to validate the e-pass with convience.

E-PASS GENERATION AND MANAGEMENT SYSTEM throughout CURFEW could be a web-based technology that may manage the records of pass that is issue by body and additionally facilitate to supply on-line curfew e-pass to folks that have to be compelled to travel mandatory. Curfew Pass Management System is associate automatic system that delivers processing in terribly high speed in systematic manner.

In CPMS we have a tendency to use PHP and MySQL info. this is often the project that keeps records of the pass that is issue by body. CPMS has one module i.e. admin.

Dashboard: during this sections, admin will concisely read the entire range of class and the way several pass are generated in at some point, yesterdays and last seven’s days

Category: during this section, admin will manage class (add/update).

Add Pass: during this section, admin add pass.

Manage Pass: during this section, admin will update pass and take print of that pass .

Reports: during this section admin will generate pass reports between 2 dates.

Search: during this section, admin will search a selected travel by pass range.

Admin may also update his profile, amendment the arcanum and recover the arcanum.

Brief info concerning homepage

User will visit home page and search pass details by coming into pass range.

Note: during this project MD5 coding methodology used.

### 3. CONCLUSIONS

E-PASS GENERATION AND MANAGEMENT SYSTEM throughout CURFEW has several powerful options and is actually over a "simple" schematisation tool. With its support of MDA (Model Driven Architecture), it's a lot of aimed toward folks exploitation UML in associate intensive manner and with some code generations objectives than for merely drawing diagrams to document necessities. However, exploitation E-PASS GENERATION AND MANAGEMENT SYSTEM throughout CURFEW even as a schematisation tool work fine, particularly on Windows because the tool is constructed with city and may execute quicker than the Java-based tools. nowadays is laptop world wherever the items need to be done promptly that needs best resources and best ways. thanks to this inevitable demand, cybernation of every and each sector within the main stream is should, in order that it will be command itself within the race. Few eye catching options of our project square measure its simplicity, accuracy, and its user friendly interface. Our software system incorporates all the options and facilities provided by the Visual Studio software system. This project has been developed to manage the whole operating of the Curfew Pass body. Our software system simplifies and replaces all the manual effort and therefore the paper works done by the executive to a totally electronically surroundings. thus each the user and therefore the body square measure at their ease. The user is serviceable at his footsteps whereby he simply varieties within the request and he's simply a click away. we'd wish to convey our sincere feeling and due to all, UN agency stood as our backbone, in coming up with, information and serving to North American nation in capital punishment this project with success.

### ACKNOWLEDGEMENT

I take this opportunity to express my profound gratitude and deep regards to my teachers and project guide **Prof. Tanzeem Syed** for their exemplary guidance, monitoring and constant encouragement throughout the course of this project.

### REFERENCES

1. <https://www.w3schools.com/php/default.asp>
2. <https://www.sitepoint.com/php/>
3. <https://www.php.net/>
4. <https://www.mysql.com/>