

Tribal Region Development: Trimbakeshwar Taluka

Mr. Darade Sanket Sanjay¹, Ms. Madhuri Nikam²

Post Graduate Section in Town Planning, Civil Engineering Department,
School Of Engineering and Technology, Sandip University

Abstract— Tourism conservation is well planned that can actually help to develop the economy by safeguarding the assets that networks depend on, instead of exhausting them. The travel industry produces monetary development by making economical, non-destructive methods for money for the network, for example, visits. Preservation of social legacy includes assurance and rebuilding utilizing "any strategies that demonstrate successful in keeping that property in as near its unique condition as feasible for whatever length of time that conceivable. Protection of social legacy is frequently connected with workmanship accumulations and galleries and includes gathering care and the board through following, examination, documentation, show, stockpiling, precaution preservation, and rebuilding.

Index Terms—Tribal, Population, Transportation, development, region.

I. INTRODUCTION

The administration of India has set up the service of Tourism and culture to support social the travel industry in India. Tourism plays a dominant role in strengthening the Indian economy. Among the three most contributing sectors in the Indian economy which are agricultural, industry and tourism can be viewed as the biggest and quickest contributing element in the Indian economy. Indian tourism has an offer of 6.7% in its GDP, which is expanding. It is roughly \$120 billion Industry, employs 37 million people and by 2020 is stated to become bigger than the IT industry. January 25th is marked as India's National Tourism Day to create awareness about the significance of tourism for the economy. The tourism industry has turned out to be one of the real divisions in international business, and speaks to, in the meantime, one of the primary pay sources for developing nations.

Living in remote forests and hill regions, the tribal people of India have remained unrecognized and ignored, and suffered a long neglect and isolation all through the centuries.

The level of tribal economy is quite uneven though their economy is largely self-sufficient, unstructured and non-specialized. On the one extreme, there are tribal communities who are at the food gathering and haunting stage and, at the other extreme, they have become undistinguishable from the modern agricultural and industrial societies. Similarly differences have arisen in their educational status. Some of these communities particularly in the north-east are far ahead of the general educational level in the country but, at the other end, there are communities which are still at a pre-literate stage.

1.2. Administration

The Tribal Development Department was reorganized in 1992, to be more accountable for the functions entrusted to it. The objective of I.T.D.P. was that various plan schemes and services should be integrated at the block level. However, in Maharashtra, the P.O. I.T.D.P. did not have overall powers of supervision and administrative control over the block level machinery of the other departments.

Table 1.2: list of ITDP

Sr. No.	ITDP	Taluka Jurisdiction
1	Nashik	Peith,
2		Dindori
3		Nashik
4		Igatpuri

List of population forecasting taluka wise:-

So, as we see trimbakeshwar taluka is 2nd highest tribal populated taluka in Nashik therefore our dissertation area is trimbakeshwar.

1.3. Need of Project

This also ensure the smooth accomplishment of origination goal, it imperative that meaningful and preparing tribal region development plan is prepare to attend the objective.

The objective of plan is to achieve a sustainable economic uplift of the tribal population with a spread of benefits that would reach a weaker and most disadvantage section of community.

1.4. Aim

“Tribal region development to enhance economic benefit by their cultural and tourism activity.”

1.5. Objectives

- To establish Tribal region.
- To promote cultural & tourism activity involving Tribal residence for providing economical source.
- To study Tribal development schemes as per Tribal development department of state.
- To identify the problem of that region, to find the way to implement the solution.

II. STUDY AREA PROFILE

2.1 Study area profile

Trimbakeshwar is arranged in the Nashik District of Maharashtra, India. It is committed to Lord Shiva and is one of the twelve Jyotirlingas. The remarkable component of the Jyotirlinga situated here is the Linga in the sanctuary is as a three-colored typifying Tridev, Lord Brahma, Lord Vishnu, and Lord Shiva.

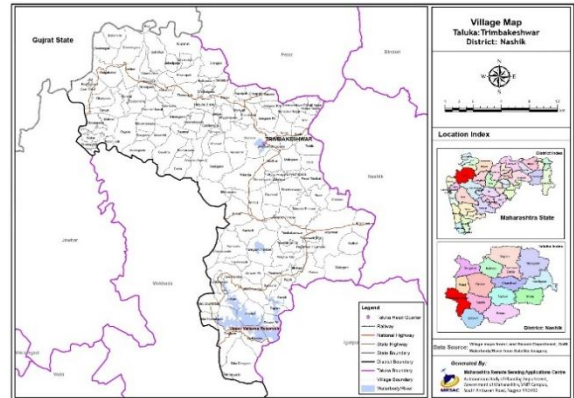


Fig 2.1: Geographic Location

2.2 Topography

The range lies on a west to east pivot southwest of Nashik laying on the western edge of the Deccan Plateau. The range comprises of flood basalt and exists in the locale which is known as the Deccan Traps. Trimbakeshwar Range is a mountain extend in the Western Ghats of Maharashtra completely arranged in Nashik District. The range lies 30 km southwest to the locale headquarters Nashik. The seat molded discouragement of the Brahmagiri Mountain ensures Trimbakeshwar, a town considered blessed by Hindus Devotees crowd to this town to visit the holy Trimbakeshwar Shiva Temple.

2.2 location

Trimbakeshwar taluka share boundary with three taluka's of Nashik on north site Peint, on east side Nashik, on southern east side Igatpuri taluka. Two district boundary share on complete west side to trimbakeshwar taluka which content Mokhada taluka and Jawhar taluka, on northern side Gujarat state boundary also a joint with trimbakeshwar taluka.



Fig 2.3. Location of Surrounding Village

Two major road passing through trimbakeshwar taluka one national highway NH848 four lane road it is spur road for NH 48 Nashik to Mumbai total length of 273.6km in trimbakeshwar taluka around 36km and one state highway around 74 km.

Table 2.1 Road Length

Sr. No.	Road	length
1	NH 848	74km
2	SH 30	36km

In trimbakeshwar taluka Major River is Godavari River and one back water reservoir of Mukane dam in south side major reservoir name as upper Vaitarna reservoir with volume of 545 cubic meter and total length of 1530m total capacity of it is 203,970 cubic meter.

III. DATA COLLECTION

3.1. Area, Demography, and Economy

Trimbakeshwar is one of the 15 Talukas of Nashik District. There are 334 villages and 1 town in Trimbakeshwar Taluka. Trimbakeshwar taluka of Nashik locale has an all-out populace of 168,423 according to the registration 2011.out of which 85,298 are guys while 83,125 are females in 2011 there were absolute 30,410 families living in trimbakeshwar taluka. The Average sex proportion of trimbakeshwar taluka. As Trimbakeshwar is a Hindu religious spot, different types of individuals exist which incorporates the territory of individuals living in a similar district, just as the general population, relocated from different locales which incorporate the general population of religion Hindu, Muslim, Sikh, Christian, Buddhist, Jain other religion. Though going towards urban/rustic populace Out of all-out populace of Trimbakeshwar taluka and according to enumeration 2011 there are 2266 families under urban zone while 2266 are living inside the provincial territory around 7.2% of the absolute populace lives in an urban region while 92.8% in the country. While the commitment of booked clans in an urban zone is 4314 and country 130764. The all out education rate of Trimbakeshwar taluka is 68.91% out of which male proficiency rate is 64.97% and female proficiency is 50.82%. Though the sex proportion is 975.

3.2. Trimbakeshwar Population

Trimbakeshwar is a Town and Taluka in Nashik district of Maharashtra state in India. Total number of villages in this Taluka is 123. Trimbakeshwar Taluka sex ratio is 975 females per 1000 of males.

Total workers are 85,295 depends on multi skills out of which 46,273 are men and 39,022 are women. Total 34,884 Cultivators are depended on agriculture farming out of 19,889 are cultivated by men and 14,995 are women. 30,639 people works in agricultural land as a labour in Trimbakeshwar, men are 15,615 and 15,024 are women.

Table 3.1. Population of Trimbakeshwar

Population	Males	Females	Households
168,423	85,298	83,125	30,410

3.3. Trimbakeshwar Taluka Population, Caste, Religion Data:

Trimbakeshwar Taluka of Nashik locale has an all-out populace of 168,423 according to the Census 2011. Out of which 85,298 are male while 83,125 are females. In 2011 there were all out 30,410 families living in Trimbakeshwar Taluka. The Average Sex Ratio of Trimbakeshwar Taluka is 975. According to Census 2011 out of the all-out populace, 7.2% of individuals live in urban regions while 92.8% lives in the rural territories. The normal education rate in urban territories is 89.6% while that in the rustic zones is 67.2%. Likewise, the Sex Ratio of Urban zones in Trimbakeshwar Taluka is 954 while that of rural territories is 976.

Table 3.2. Demographic Feature

Population	168,423
Literacy	68.91%
Scheduled Caste	7,687
Scheduled Tribe	135,078

V. REGIONAL PLAN

The region enjoys a magnetic pull for tourism around the globe. The promise of win-win for the investors as well as the region is undeniable. The region is gifted with

salubrious climate, abundance of natural resources, rich cultural heritage and most importantly, proximity to India's financial capital – Mumbai. These critical factors provide impetus for growth of new businesses & expansion of existing ones. Nashik is a part of golden triangle (Mumbai-Pune-Nashik) where pace of socio economic development is very high.

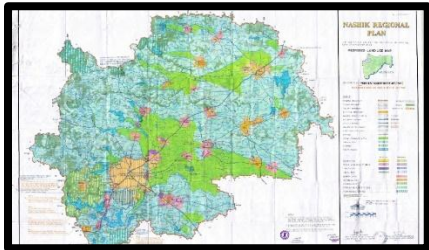


Fig 7.1 Regional plan of Nashik District

Agriculture

In early 1925, the table grape revolution was started in Ojhar, a small town near Nashik, by Raosaheb Jai Ram Krishna Gaikwad. Today, table grapes are exported to Europe, the Middle East, and Asia.

There is a Hindustan Aeronautics Limited aircraft manufacturing plant 10 mi (16 km) from Nashik. The Currency Note Press and India Security Press are on Nashik Road, where Indian currency and government stamp papers are printed respectively. Existing industrial areas in Nashik district are Satpur, Ambad, Sinnar, Igatpuri, Dindori and Vinchur. The proposed areas are Additional Sinnar and Malegaon MIDC.

7.3 Regional Plan of Trambak Taluka

The northern substance of the range is the origination of India's second longest stream Godavari. The southern essence of these slopes is secured with thick timberlands and in this manner structure a catchment region for the Upper Vaitarna Reservoir, the most significant and solid wellspring of consumable water supply to the metropolitan city of Mumbai.



Fig 7.2 Regional Plan of Trambak Taluka

The range lies on a west to east pivot southwest of Nashik laying on the western edge of the Deccan Plateau. The range comprises of flood basalt and exists in the locale which is known as the Deccan Traps. Trimbakeshwar Range is a mountain extend in the Western Ghats of Maharashtra completely arranged in Nashik District. The range lies 30 km southwest to the locale headquarters Nashik. The seat molded discouragement of the Brahmagiri Mountain ensures Trimbakeshwar, a town considered blessed by Hindus Devotees crowd to this town to visit the holy Trimbakeshwar Shiva Temple.

The atmosphere here is delegated Aw by the Köppen-Geiger framework. In Trimbakeshwar, the normal yearly temperature is 23.5 °C. The precipitation here midpoints 2174 mm. Relative stickiness ranges from 43% to 62%. Winds: Winds are commonly light to direct with some fortifying in wind power amid the last piece of the late spring season and in the south-west rainstorm season. Winds are south-westerly or westerly in the south-west rainstorm season. In the post-storm season winds are light and variable toward the path in the mornings and north-easterly or easterly in the evenings. Exposed to the harsh elements season, twists blow from bearings between south-west and northwest in the mornings and among north and east in the evenings.

7.4 Land Use map for Trambak, Taluka

Land use map so use agricultural land, recreational land and commercial land in trambak taluka. This is approximate drawing of regional plan of trambak taluka. Dark green color represent agricultural reserve land i.e. no development land and light green land represent green belt with recreational land and yellow region in commercial land where development is allowed.

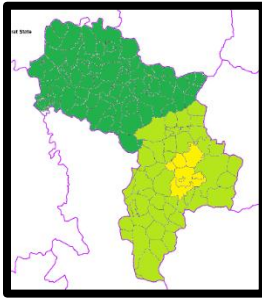


Fig 7.3 Land Use Map for Trambak, Taluka

VI. GOVERNMENT SCHEMES

6.1 NAV SANJEEVANI YOJANA

The objective of Nav Sanjeevan Yojana is to put into effect and improve various schemes for tribal people like water supply, health centers and so on. In an included and coordinated manner. The scheme become in advance carried out by diverse organizations at various levels without making sure proper coordination. At present the subsequent schemes are blanketed inside the Nav Sanjeevan Yojana and it is being applied below one head. Nav Sanjeevan Yojana is being implemented in tribal sub-plan area, additional tribal sub-plan vicinity, minima area and nation area.

6.2 healthcare schemes

In phrases of Local Corporation, tribal regions generally fall into far off areas. As a result, such regions seem like disadvantaged of get admission to to ok fitness care in a well-timed manner. Fitness services can't be supplied in remote regions, especially during the monsoon season whilst transport offerings are disrupted. To overcome this, the government has determined to provide the subsequent health centers in such far off regions during the monsoon season from 1996-97. Additionally, from the yr. 2003-04, the authorities has decided to enforce all fitness / nutrients schemes below might sample in all the districts of the tribal regions. 1

6.3 nutrition schemes

In dharani and chikhaldara talukas of Amravati district and 15 integrated baby development tasks in far flung tribal regions of thane, Nashik, duel and gadchiroli districts, and additional supplementary nutrients can be supplied to the tribal. The revised rate of incremental supplemental vitamins is as shown in the table under.

6.4 employment associated programs

Each tribal village or institution of that village have to get adequate employment possibilities in such a manner that there may be no migration of tribal. Therefore, enough paintings has been sanctioned for implementation of employment program. Underneath the employment application, people are paid directly and no payments are pending. Eight. Four. 1 await mortgage the authorities of Maharashtra has been imposing await mortgage scheme considering the fact that 1978 to shield the tribal people from malnutrition also, as decided earlier, the households who have malnourished kids of class 3 and class 4 can be given the advantage of await mortgage regardless of their arrears. An outlay of rest. 10. 00 crore has been earmarked for this scheme for the year 2014-15.

6.5 grain fund scheme: -because of indebtedness of tribal families, the state government has begun implementation of traditional grain bank scheme at village level from July, 1995 with the active cooperation of voluntary businesses / no's and people interested by participating within the scheme. Every member will deposit a positive sort of grain as grain financial institution at some point of the season and / or near the give up of the season and could go back the grain as consistent with their requirement within the rainy season and return it with interest on the time for this purpose have these days been surpassed over with the aid of the authorities to the Maharashtra kingdom co-operative tribal improvement business enterprise. In order to keep away from inconvenience inside the delivery of food grains.

6.6. Eklavya English medium residential college (centrally backed public college)

Cause and layout: a centrally backed scheme of English medium residential schools is being applied for the students of scheduled tribes to get schooling in English. In such a school etc. Fifth to and so forth. Education is imparted until tenth standard. Such English medium residential faculties 1) path street, Nashik, dist. Nashik. 2) Border ta. Dayana, dist. Thane three) taluses (Bandera) ta. Nandgaon khandeshwar four) chikhaldara, Tal. Dharani, dist. Amravati five) chair par soda, ta. Dist. Nagpur. Government choice concerning accreditation of Eklavya model residential ashram faculty, the year from which it has been commenced and the wide variety of college students are as below: -

VII. PROPOSAL

9.1 Economic Development Centre

This is the umbrella schemes for Adarsh ashram college, Eklavya English medium residential school, tribal handicraft exhibition, tribal traditional dance competition, Warli portray opposition scheme certainly one of our fundamental goal is to offer not pricey center in trambak vicinity for uplifting their economic increase with schooling and academic helps. So on that principle we refer gyaan middle, Rajasthan. The Rajkumari Ratnavati College can be offered to women under the poverty line living inside the wilderness area of Jaisalmer district, Rajasthan. Running a kingdom-based curriculum, the facilities will consist of school rooms, a library, a computer middle, and a bus facility to transport girls from neighboring villages. The faculty will offer training for an envisioned four hundred+ women from kindergarten thru magnificence 10, who will learn to read and write and boom conventional capabilities precise to the location. The faculty may even offer a midday-meal application to make certain proper vitamins for the scholars as well as lessen families' monetary burden.

The gyaan center will equip young girls with the gadget to similarly their training and independence in addition to enhance interest surrounding the problems faced via girls in India on an international scale. Citta's 2nd goal is to beautify gender parity inside the vicinity through the ladies' cooperative. Even as girls are receiving a schooling at the women university, neighborhood artisans will train mothers and distinctive girls weaving and embroidery strategies from the Jaisalmer location which can be on the verge of being forgotten and misplaced. Those commands will maintain and beautify conventional strategies on the identical time as organizing financial independence for the women, their households, and their groups. Moreover, these conventional strategies paired with contemporary designers will produce international first-rate gadgets for the worldwide marketplace, thereby diversifying and improving the nearby economy. Already, citta has installation relationships with excessive-cease markets to create merchandise with the woman's cooperative with the intention to convey sales again to the network. The schooling, independence, and empowerment girls benefit on the gyaan center will, in flip, incentivize households to teach their daughters, bringing the gain of the middle entire circle.

9.2.1. Economic Development Centre in Trimbak Taluka

Communicate to the gyaan center we're capable of offer financial improvement middle in trambak taluka. Critical goal of that center is to provide marketplace region to the tribal society to exhibit their cultural product, historic art, antique collection and so on. Such element entice to the tourist and as with growing tourism employment also increases for that financial development middle (etc.) are pin point for all. There are a part of monetary development middle first we provide places to skilled craftsman, painters, potter, tailor, cook dinner and lots of others. All this humans are making pots, portray, wall portray, clothes like chatali and wearable gadgets, unique food objects and so forth. They may be doing this topics for his or her a long time. And then we can supply them vicinity to expose their expertise all one of a kind people via exhibition. Further in economic development middle anyone how is interesting in learning this factor can take a look at underneath this expert people. This is whole circle without damaging their cultural and harming their livelihood we're able to deliver them financial facility and we will records the expertise beneath them

Fundamental problem that wherein we can locate this monetary development middle in trambak region. Due to downside of location and various population we will's offer most effective one economic improvement center. There's that this map displaying very are we able to provide financial improvement middle with presenting this facility to all of the location economic manner with minimum value and maximum output. First we simplest provide this facility near center location. Due to the fact in core area we have already got masses of demand for and its miles our most effective foremost approaches for fulfill demand sector. We will gather all product we want to sale and collect to the economic improvement center and for that we need higher transportation system that is over 2nd important purpose comes in feature.

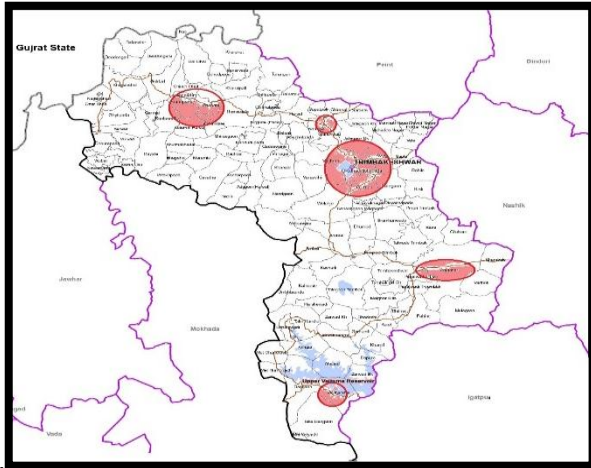


Fig 9.3. Economic Development Centre in Trimbak Taluka

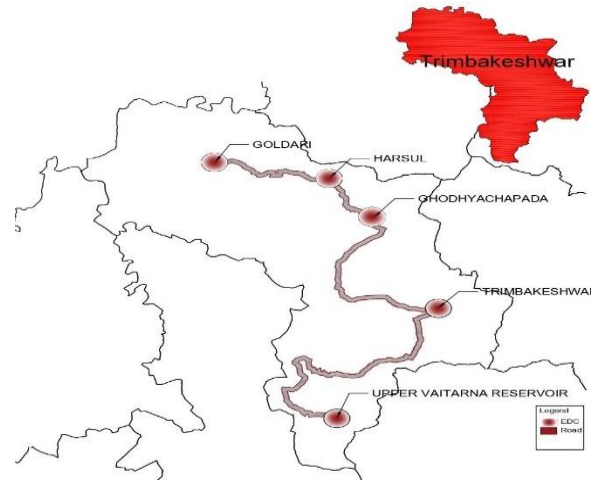


Fig 9.4 Transit Oriented Development at Trimbak Region

9.2 Proposal on transit corridor at Trimbak Region Proposal for Para- transit corridor-

Unique agencies running for the same reason within the equal vicinity functioned nearly in an autonomous manner and the awful lot talked of “integration” remained simplest on paper. Even underneath the tsp pattern, besides the additional commissioner (tribal development at the divisional stage) and mission officer at the project stage, all others (e. G. The collector, i. E. Additional deputy commissioner) had been too busy to look after the implementation. Loss of collaboration and co-ordination between the tdo, and the task officer was one of the main hurdles at the undertaking level.

Jeep Safari- is for those that ache for to investigate the land all alone. The rough scenes, the passes and mountain valleys that are in any case neglected, and aren't too difficult to the endeavor via principally due to their extreme climatic conditions would be the regions, which certainly draw in the explorer to take an excursion through jeep through these territories. A safari proposes investigating the less popular objections in addition to the open country, and could likewise incorporate the raids off the streets

Here we are providing jeep safari organized by tribal people, to commute between distinct destination. So those people having advantage like they well known about the unexplored are, landscapes, mountains & valleys. Trimbak region fully cover with mountain so this proposal suggest on basis of trimbak geographic background & mainly for tribal community based development to increase their economy & standred of living.

Rickshaw-For the tourists coming to Trimbak, one of the historical cities in nashik known as the city of heritage. An extraordinarily planned auto cart implied for touring and the exceptional thought of a visit bundle via auto carts .In the primary stage 10 uniquely planned carts, which will have every cutting edge convenience, will be presented. Thoroughly prepared drivers will take vacationers, both homegrown around the city. As shown in the fig 9.4 map all points are covered by them, will be among some of the places where tourists will be taken.

"The task will be carried out in the city as a team with a confidential organization however mostly for ancestral individuals. The carts will be the most affordable and solid traveler vehicles in the city. Because of the minuscule size of the vehicle, we can take you through thin streets to a place of interest.

The auto drivers will be given direction preparing on conduct and language viewpoints to guarantee a cordial help. They will be given booklets conveying the travel industry related data and city maps. A booklet containing the names and phone quantities of the auto drivers will be given to visiting vacationers. The cars will have offices like GPS, CCTV observation cameras for the security of the sightseers and contact screen data guides.

VII. CONCLUSION

The charter places a responsibility upon states to sell the pursuits of scheduled tribes and guard them from social injustice and all sorts of exploitation. It have to be stated that displacement of tribal from their lands amounts to violation of the 5th schedule of the constitution as it

deprives them of control and ownership of herbal resources and land important for his or her manner of existence. The forces of globalization are developing barriers for tribal people to come together to identification and well known commonality. Aforementioned analysis shows that the unique programmers and guidelines are necessary of reductions inside the length and scope of social sectors, can indirectly reduce allocations to social services and primary provisions. Such cuts in social spending are probably to hit the tribal the hardest who have already got confined get entry to training and fitness centers.

REFERENCES

- [1] An impact of tribal sub-plan scheme on tribal community: a sociological study*Dr. Ramesh h. Makwana international journal of development research vol. 07, issue, 07, pp.13879 13886,uly, 2017
- [2] Development: a new vision for transforming India minimum seen* international journal of recent scientific research research vol. 9, issue, 12(e), pp.30118-30121, december, 2018
- [3] Analytical Study of the Impact of Globalization on Tribal Communities in India with Reference To Economic Justice, All Inclusive Growth and Social Transformation Mr. Aniruddha Vithal Babar
- [4] Seedling School of Law And Governance, Jaipur National University, Main Campus, Jagatpura, jaipurjournal of Poverty, Investment and Development www.iiste.org ISSN 2422-846X An International Peer-reviewed Journal Vol.21, 2016
- [5] Imperial Journal of Interdisciplinary Research (IJIR) Vol-2, Issue-9, 2016 ISSN: 2454-1362, <http://www.onlinejournal>.
- [6] Tribal Development: Journey So Far and the Way Ahead Ashish Gupta Department of Anthropology, Dr 7.H. S. Gour University, Sagar MP Anup Sharma (2006), Health Care in a Torniquet, Times of India, March 31, 2006.
- [7] Bose, A.B. (1970), Problems of Education Development of Scheduled Tribe, Man in India, Vol. L (1) pp. 26 51.
- [8] Central TB Division (2005), TB India 2005 RNTCP Status Report- Frontline TB care providers working towards freedom from TB.
- [9] Directorate General of Health Services. Ministry of Health and Family Welfare, Norman Bhava, New Delhi. S.
- [10] W. D. Doyle, –Magnetization reversal in films with biaxial anisotropy, ||in*Proc.1987INTERMAG Conf.*, 1987, pp. 2.2-1-2.2-6.
- [11] Directorate General of Health Services. Ministry of Health and Family Welfare, Norman Bhava, New Delhi
- [12] Babar, A. V. (2016). Analytical Study of the Impact of Globalization on Tribal Communities in India with Reference to E